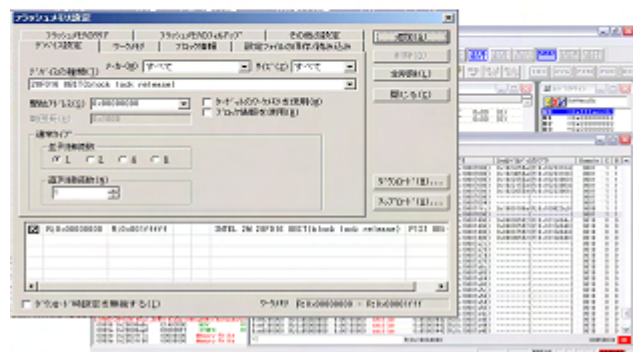


ARM Core EJ-SCT Universal JTAG Emulator with WATCHPOINT Debugger



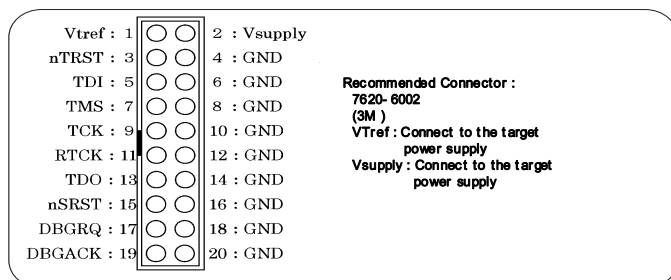
- Supports ARM licensed Cortex[®], ARM11[®], ARM9TDMI[®], ARM7TEMI[®]
- Supports Thumb, Thumb2, Thumb2EE, UFP, SIMD, and more.
- Available software for multi-core same type CPU debug & ARM with Tensilica Xtensa LX cores.
- Supports semihosting
- Automatic JTAG CPU detection
- Hardware breakpoints on address and status
- Unlimited software breakpoints
- Read & Write FLASH in manual or macro mode
- Small and USB powered make it perfect for on-site debug or firmware updates.
- Stand-alone FLASH programming without a PC - DC power supply needed for this mode.
- Recorded or text macros execute at a touch of the button on the JTAG pod. Perfect for test, field firmware updates, and small run production programming with or without a PC connection.

Supported Processors	Cortex, ARM11, ARM9, ARM7 Cortex Core Series (A8, R4, M3) ARM11 Core Series (ARM1136, ARM1176 etc.) ARM9 Core Series (ARM9TDMI, ARM9TDMI-S, ARM910T, ARM920T, ARM940T, ARM9E, ARM946E, ARM966E, ARM922, ARM925, ARM926 etc.) ARM7 Core Series (ARM7TDMI, ARM7TDMI-S, ARM710T, ARM720T, ARM740T etc.)
Target Vcc	+1.8 V to 3.6 V
Memory and I/O	Entire space is available
Interrupts	Both internal and external interrupts are available
ETB Trace	ETB trace via JTAG for WATCHPOINT option available
Breakpoints	<ul style="list-style-type: none"> • Hardware breakpoints <ul style="list-style-type: none"> - 2 hardware breakpoints (ARM7/ARM9) Instruction execution address, memory access, data can be specified. - 7 hardware breakpoints (ARM11) Instruction execution address (3 points), memory access (2 points), others (2 points) - 9 hardware breakpoints (Cortex R4) Instruction execution address (6 points), memory access (1 points), others (2 points) • Unlimited software breakpoints <p>The Watchpoint debugger can also force code execution to break.</p> <ul style="list-style-type: none"> • ARM7/9 Step over, Step out, run to cursor debug uses one hardware breakpoint. <p style="text-align: right;">*Note the number of breakpoints depends on designers CPU configuration</p>
Flash Memory	Read, clear and write external FLASH target memory.

WATCHPOINT Supports

JTAG Cables

- Part No. SCP7500: 20 to 20 pin
- Part No. CS2801: 20 to 14pin (ARM)
- Part No. VK0019: 20 to 14pin (TI)



Compiler

TI: Code Composer Studio®
ARM: ADS, RealView
Metaware: High C/C++/EC++ for ARM
Green Hills: GHS
GAIO: XCC-V
GNU:
IAR: EWARM

Operating Systems

NORTi G-OS PrKERNEL
VxWorks Linux iTRON
Symbian Windows CE L4 μ -kernel

* Contact Sophia Systems for the latest tool chain info.

Order Entry

Part number SCD-SCM0790E

*To add ETB Trace option add part number U4A401 to your order.

Sophia
systems™

EECO

Enable Engineering Co. Inc.

Call 800.686.4228

email sales@eecosales.com

www.eecosales.com

Windows98, Me, 2000, or XP, Memory 32 Mbyte (64 Mbyte recommended), 20 Mbyte drive space

Notes: Vista (32-bit version): driver software update is required.

Vista (64-bit version): Contact Sophia Systems for WATCHPOINT updates.

XP (64-bit version): driver software update is required.

XP (64-bit version): operation-confirmed only with AMD's Athlon64.

Watchpoint is a registered trademark of Sophia Systems Co., Ltd.

Windows is a registered trademark of Microsoft Corporation.

All other brands and product names are trademarks or registered trademarks of their respective companies

Model numbers and specifications are subject to change without notice.