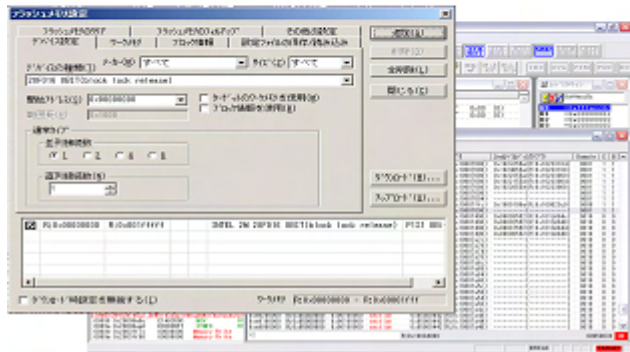


# ARM Multi-Core EJ-SCT Universal JTAG Emulator with WATCHPOINT Debugger



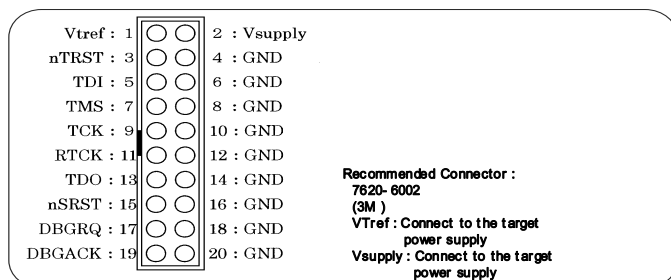
- Supports ARM licensed Cortex®, ARM11®, ARM9TDMI®, ARM7TDMI®
- Supports Thumb, thumb2, Thumb2EE, UFP, SIMD, and more.
- Multi-core same type CPU debug and ARM with Tensilica Xtensa LX, LX2 cores.
- Compatible with ARM Multi-ICE interface
- Automatic JTAG CPU detection
- Hardware breakpoints on address and status
- Unlimited software breakpoints
- Read & Write FLASH in manual or macro mode
- Small and USB powered make it perfect for on-site debug or firmware updates.
- Stand-alone FLASH programming without a PC - DC power supply needed for this mode.
- Recorded or text macros execute at a touch of the button on the JTAG pod. Perfect for test, field firmware updates, and small run production programming with or without a PC connection.

<b>Supported Processors</b>	<p>Cortex, ARM11, ARM9, ARM7</p> <p>Cortex Core Series (A8, R4, M3)</p> <p>ARM11 Core Series (ARM1136, ARM1176 etc.)</p> <p>ARM9 Core Series (ARM9TDMI, ARM9TDMI-S, ARM910T, ARM920T, ARM940T, ARM9E, ARM946E, ARM966E, ARM922, ARM925, ARM926 etc.)</p> <p>ARM7 Core Series (ARM7TDMI, ARM7TDMI-S, ARM710T, ARM720T, ARM740T etc.)</p>
<b>Target Vcc</b>	+1.8 V to 3.6 V
<b>Memory and I/O</b>	Entire space is available
<b>Interrupts</b>	Both internal and external interrupts are available
<b>ETB Trace</b>	ETB trace via JTAG for WATCHPOINT option available
<b>Breakpoints</b>	<ul style="list-style-type: none"> <li>• Hardware breakpoints <ul style="list-style-type: none"> <li>- 2 hardware breakpoints (ARM7/ARM9) Instruction execution address, memory access, data can be specified.</li> <li>- 7 hardware breakpoints (ARM11) Instruction execution address (3 points), memory access (2 points), others (2 points)</li> <li>- 9 hardware breakpoints (Cortex R4) Instruction execution address (6 points), memory access (1 points), others (2 points)</li> </ul> </li> <li>• Unlimited software breakpoints</li> </ul> <p>The Watchpoint debugger can also force code execution to break.</p> <p style="text-align: right;">*Note the number of breakpoints depends on designers CPU configuration</p>
<b>Flash Memory</b>	Read, clear and write external FLASH target memory.

## WATCHPOINT Supports

### JTAG Cables

- Part No. SCP7500: 20 to 2 pin
- Part No. CS2801: 20 to 14pin (ARM)
- Part No. VK0019 : 20 to 14pin (TI)



### Compiler

TI Code Composer Studio®  
ARM: ADS, RealView  
Metaware: High C/C++/EC++ for ARM  
Green Hills: GHS  
GAIO: XCC-V  
GNU:  
IAR: EWARM

### Operating Systems

NORTi G-OS PrKERNEL  
VxWorks Linux iTRON  
Symbian Windows CE L4 μ-kernel

\* Contact Sophia Systems for the latest tool chain info.

## Order Entry

Part number **SCD-SCM0791E**

\*To add ETB Trace option add part number U4A401 to your order.

**Sophia**  
systems™

**EECO**

Enable Engineering Co. Inc.

Call 800.686.4228

email [sales@eecosales.com](mailto:sales@eecosales.com)

[www.eecosales.com](http://www.eecosales.com)

Windows98, Me, 2000, or XP, Memory 32 Mbyte (64 Mbyte recommended), 20 Mbyte drive space

- Notes:
- Vista (32-bit version): driver software update is required.
  - Vista (64-bit version): Contact Sophia Systems for WATCHPOINT updates.
  - XP (64-bit version): driver software update is required.
  - XP (64-bit version): operation-confirmed only with AMD's Athlon64.

Watchpoint is a registered trademark of Sophia Systems Co., Ltd.

Windows is a registered trademark of Microsoft Corporation.

All other brands and product names are trademarks or registered trademarks of their respective companies

Model numbers and specifications are subject to change without notice.