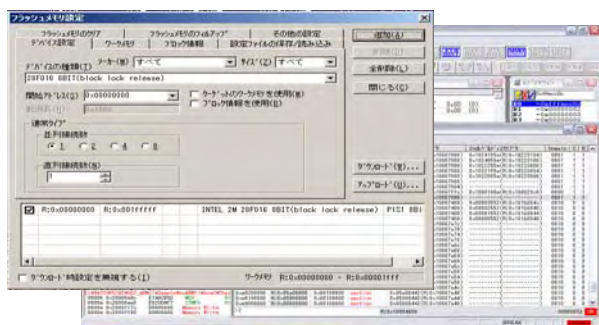


EJ-SCT OMAP ARM-Cortex JTAG



- Supports Cortex®, ARM11®, ARM9TDMI®, ARM7TDMI®
- Compatible with ARM Multi-ICE interface
- ARM® Thumb® state debugging support, etc. (Thumb, Thumb2, Thumb2EE, UFP, SIMD, etc.)
- Set hardware breakpoints on address & status
- Supports the semi-hosting capability
- Unlimited software breakpoints in RAM and Flash ROM
- Clear, read and program FLASH
- Perfect for field debugging or maintenance.
 - USB bus powered - No AC adapter required.
 - Pocket sized, 86x101x23mm
- Supports ETB capability
- JTAG pod button runs User macro scripts
 - Perfect for hardware test, small run programming and automatic field upgrades.
- Fast USB2.0 PC interface
- EJ-Debug includes WATCHPOINT® for Windows®
 - * Multi-core debugging available as an optional feature.

Specifications

Target CPU	Cortex, ARM11, ARM9, ARM7 OMAP :CORTEX A8 OMAP [3410, 3420, 3430, 3440, 3503, 3515, 3525, 3530]) :ARM1136 OMAP [2420, 2430, 2431]) :ARM926 OMAP [17xx, 16xx, 15xx, 59xx, 1610, 1611, 1612, 1621, 1710, 5912], TMS320DM [350, 355, 6446] :ARM7 TMS [320, 470, etc], OMAP [DM270, 850, 7xx]
Target Vcc	Vcc=+1.8 V to 3.6 V
Memory & I/O	Entire space is available to the User.
Interrupts	Both internal and external interrupts are available to the User.
Breakpoints & Break Options	Hardware breakpoints: Cortex per cpu's capability. ARM7/ARM9: Max 2 hardware breakpoints* on instruction and memory access with specified data. ARM11: Max 7 hardware breakpoints. 3 On instruction address, 2 on the memory and 2 additional points may be specified. Unlimited software breakpoints. Debugger override forced break capability. *ARM7 & 9, Step Over, Step Out, & Run to Cursor functions uses one core H/W BP.
ETB Capability	ETB trace via JTAG for WATCHPOINT option available.
Flash Memory	1. Download a User program directly to the target's external Flash memory. 2. High-speed downloading using the target's memory resources.

Configuration



JTAG CABLE types:

SCP7500: 20 to 20pin
 CS2801: 20 to 14pin (ARM)
 VK0019 : 20 to 14pin (TI)

Supported Tool Chains:

WATCHPOINT supports the following compilers and supported OS*:

Compilers:

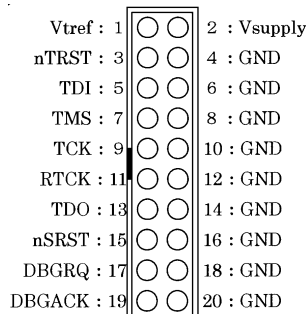
TI Code Composer Studio®
 ARM: ADS, RealView
 Metaware: High C/C++/EC++ for ARM
 Green Hills: GHS
 GAIO: XCC-V
 GNU:
 IAR: EWARM

Supported OS:

NORTi G-OS PrKERNEL
 VxWorks Linux iTRON
 Symbian Windows CE L4μ--kernel

*Please contact Sophia Systems for the latest tool chain info.

Target ICE Connections



Recommended Connector;
 3M;7620-6002

Vtref Vsupply

JTAG Header Connector pin Assignment (Top View)

Ordering Information

System requirements for WATCHPOINT® Debugger

OS	Memory	Hard Disk
Windows XP/2000	64 Mbytes	25 M byte for installation
Windows Vista	512 Mbytes	25 M byte for installation

Vista 32-bit version	Driver software update is required.
Vista 64-bit version	Contact Sophia Systems for WATCHPOINT updates.
XP 64-bit version	Driver software update is required.
XP 64-bit version	Operation-confirmed with AMD's Athlon64.

