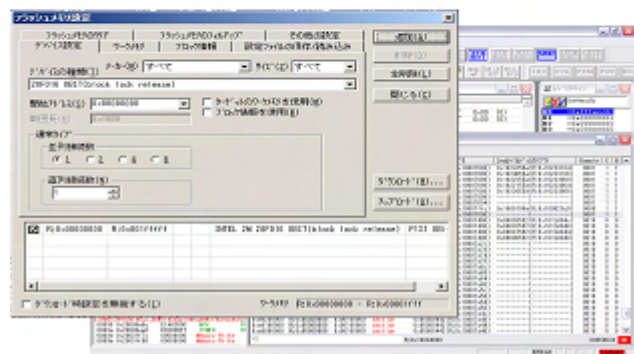


# Marvell PXA3xx & PXA2xx Series EJ-SCT Universal JTAG Emulator with WATCHPOINT Debugger



- For Marvell® PXA27xx and PXA3xx series CPU s.
- Standard 20 Pin JTAG interface
- Supports wireless MMX®
- View and modify internal peripheral registers
- View & modify coprocessor registers
- 2 Hardware breakpoints on address and status
- Unlimited software breakpoints
- Branch trace capability
- Read & Write FLASH in manual or macro mode
- Small and USB powered make it perfect for on-site debug or firmware updates.
- Stand-alone FLASH programming without a PC -  
- DC power supply needed for this mode.
- Recorded or text macros execute at a touch of the button on the JTAG pod. Perfect for test, field firmware updates, and small run production programming with or without a PC connection.
- Includes Watchpoint debugger for Windows® 2000 and XP operating systems

<b>Supported Marvell Processors</b>	Marvell® PXA3xx and PXA27xx processor series
<b>Target Vcc Range</b>	Vcc= +1.8 V to 3.6 V
<b>Memory and I/O</b>	Entire space is available
<b>Interrupts</b>	Both internal and external interrupts are available
<b>Branch Trace</b>	Records code branches until break
<b>Breakpoints and Break Options</b>	<p>Execution address break options:</p> <p>2 Hardware breakpoints on instruction address or memory access. (Code step over and step out functions use one breakpoint.)</p> <p>Unlimited software breakpoints</p> <p>The Watchpoint debugger can also force code execution to break..</p>
<b>Flash Memory</b>	Read, clear and write external FLASH target memory. NAND FLASH parts are not standard and can be added by NRE. NAND FLASH programming example document is included with the EJ-SCT.

## Supported Compilers

Intel C++ Software Development Tool Suite  
ARM ADS, Real View

## OS Support

Windows CE, Linux

Note. Additional Link & Sync Watchpoint plug-in software is available for WinCE and Linux IDE sessions.

WinCE plug-in - Part number U43413

Linux IDE plug-in - Part number U42499

## Target Connection - JTAG CABLE type SCP7500

Recommended connector  
7620-6002 From 3M

Vtref : 1	2 : Vsupply
nTRST : 3	4 : GND
TDI : 5	6 : GND
TMS : 7	8 : GND
TCK : 9	10 : GND
N.C : 11	12 : GND
TDO : 13	14 : GND
nRESET : 15	16 : GND
N.C : 17	18 : GND
N.C : 19	20 : GND



20-pin JTAG Interface Connector Pin Assignment ( Top View )

## Ordering

Part number **SCD-SCM9100**

## PC Requirements

Windows98, Me, 2000, or XP

Memory: 32 Mbyte (64 Mbyte recommended)

Watchpoint installation requires 20 Mbyte drive space

**Sophia**  
systems™

**EECO**

Enable Engineering Co. Inc.

Call 800.686.4228

email [sales@eecosales.com](mailto:sales@eecosales.com)

[www.eecosales.com](http://www.eecosales.com)

Watchpoint is a registered trademark of Sophia Systems Co., Ltd.

Windows is a registered trademark of Microsoft Corporation.

All other brands and product names are trademarks or registered trademarks of their respective companies

Model numbers and specifications are subject to change without notice.